

Office 2013 Customizations

<p>Welcome</p> <p>Setup</p> <p>Install location and organization name</p> <p>Additional network sources</p> <p>Licensing and user interface</p> <p>Remove previous installations</p> <p>Add installations and run programs</p> <p>Office security settings</p> <p>Modify Setup properties</p> <p>Features</p> <p>Modify user settings</p>	<p>Specify the default folder in which to install Microsoft Office. The default folder is [ProgramFilesFolder]\Microsoft Office.</p> <p>Default installation path:</p> <p>[ProgramFilesFolder]\Microsoft Office</p> <p>Note: The default installation path will only take effect if the product is installed.</p> <p>Organization name:</p> <p>St Michaels University School</p>
<p>Welcome</p> <p>Setup</p> <p>Install location and organization name</p> <p>Additional network sources</p> <p>Licensing and user interface</p> <p>Remove previous installations</p> <p>Add installations and run programs</p> <p>Office security settings</p> <p>Modify Setup properties</p> <p>Features</p> <p>Modify user settings</p> <p>Set feature installation states</p> <p>Additional content</p> <p>Add files</p> <p>Remove files</p> <p>Add registry entries</p> <p>Remove registry entries</p> <p>Configure shortcuts</p> <p>Outlook</p> <p>Outlook profile</p> <p>Add accounts</p> <p>Export settings</p> <p>Specify Send/Receive groups</p>	<p>Enter a valid product key and accept the licensing agreement for users.</p> <p><input checked="" type="radio"/> Use KMS client key</p> <p>Product key entry is not required for Key Management Service (KMS) activation.</p> <p><input type="radio"/> Enter another product key</p> <p>Multiple activation key (MAK) permitted.</p> <p>Type a valid 25-character volume license key with no spaces.</p> <p>Product key: <input type="text"/></p> <p>Select the check box to accept the terms of your license agreement on behalf of the user.</p> <p><input checked="" type="checkbox"/> I accept the terms in the License Agreement</p> <p>Display level: <input type="text" value="Basic"/></p> <p><input type="checkbox"/> Completion notice</p> <p><input type="checkbox"/> Suppress modal</p> <p><input checked="" type="checkbox"/> No cancel</p> <p>Note: Changes made on this page will only take effect during the first installation once the product is installed.</p>

Remove all

Welcome

Setup

- Install location and organization name**
- Additional network sources
- Licensing and user interface**
- Remove previous installations**
- Add installations and run programs
- Office security settings
- Modify Setup properties

Features

- Modify user settings**
- Set feature installation states**
- Additional content
 - Add files
 - Remove files
 - Add registry entries
 - Remove registry entries
 - Configure shortcuts
- Outlook
 - Outlook profile
 - Add accounts
 - Export settings
 - Specify Send/Receive groups

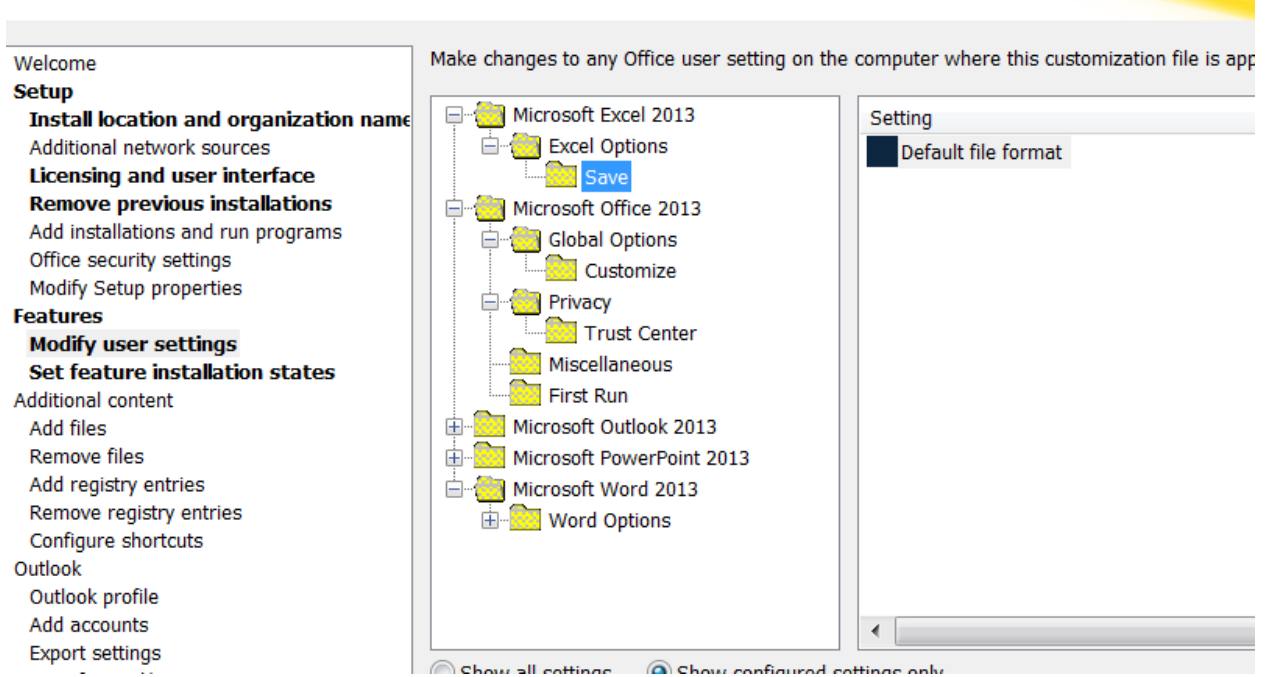
Specify earlier versions of Microsoft Office programs to keep or remove. To change default behavior, click **Details...**

Default Setup behavior; earlier versions of installed programs are removed.

Remove the following earlier versions of Microsoft Office programs:

Program
Microsoft Office Access
Microsoft Office Excel
Microsoft Office PowerPoint
Microsoft Office Word
Microsoft Office Outlook
Microsoft Office Publisher
Microsoft Office InfoPath
Microsoft Office OneNote
Microsoft Office Groove
Microsoft Office Multi-language User Interface Pack

Set Excel Default file format.xlsx

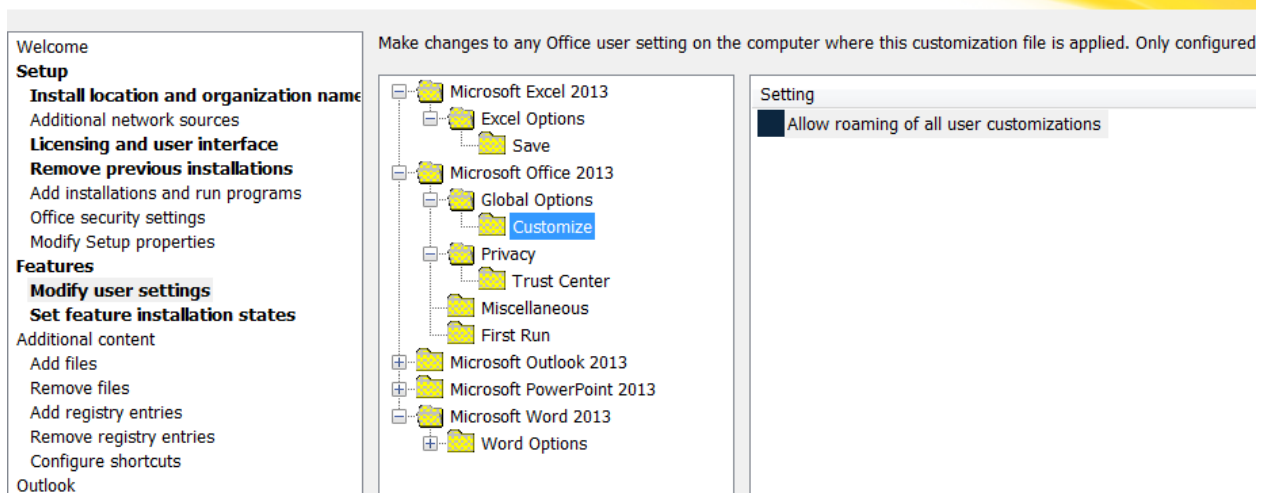


Allow Roaming of all user customizations

This policy setting allows roaming of both the Quick Access Toolbar and Ribbon customizations.

If you enable this policy setting, users' Quick Access Toolbar and Ribbon customizations will be available to them on any computer on their network when they log on.

If you disable or do not configure this policy setting, users' Quick Access Toolbar and Ribbon customizations will only be available to them on the computer on which they made the customizations.



This policy setting controls whether users see the Opt-in Wizard the first time they run a Microsoft Office 2013 application.

If you enable this policy setting, the Opt-in Wizard does not display the first time users run an Office 2013 application.

If you disable or do not configure this policy setting, the Opt-in Wizard displays the first time users run a Microsoft Office 2013 application, which allows them to opt into Internet--based services that will help improve their Office experience, such as Microsoft Update, the Customer Experience Improvement Program, Office Diagnostics, and Online Help.

Welcome

Setup

Install location and organization name

Additional network sources

Licensing and user interface

Remove previous installations

Add installations and run programs

Office security settings

Modify Setup properties

Features

Modify user settings

Set feature installation states

Additional content

Add files

Remove files

Add registry entries

Remove registry entries

Configure shortcuts

Outlook

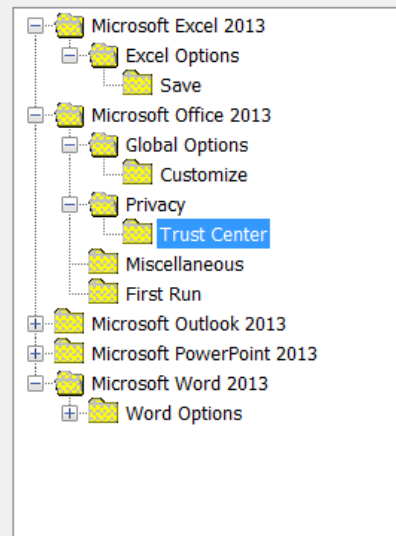
Outlook profile

Add accounts

Export settings

Specify Send/Receive groups

Make changes to any Office user setting on the computer where this customization file is applied. O



Setting

Disable Opt-in Wizard on first run

Show all settings

Show configured settings only

Suppress recommended settings dialog

This policy setting controls the Recommended Settings dialog on first run of Office.

If you enable this policy setting, the recommended settings dialog will not be displayed on first run of Office.

If you disable or do not configure this policy setting, the recommended settings will provide choices to the user to opt into services such as Microsoft Update, new software notifications, Customer Experience Improvement Program, Office Diagnostics (Automatically receive small updates to improve reliability) Online Help (Online content options) and Online Search Relevancy that will help improve their Office experience.

Show SkyDrive Sign In

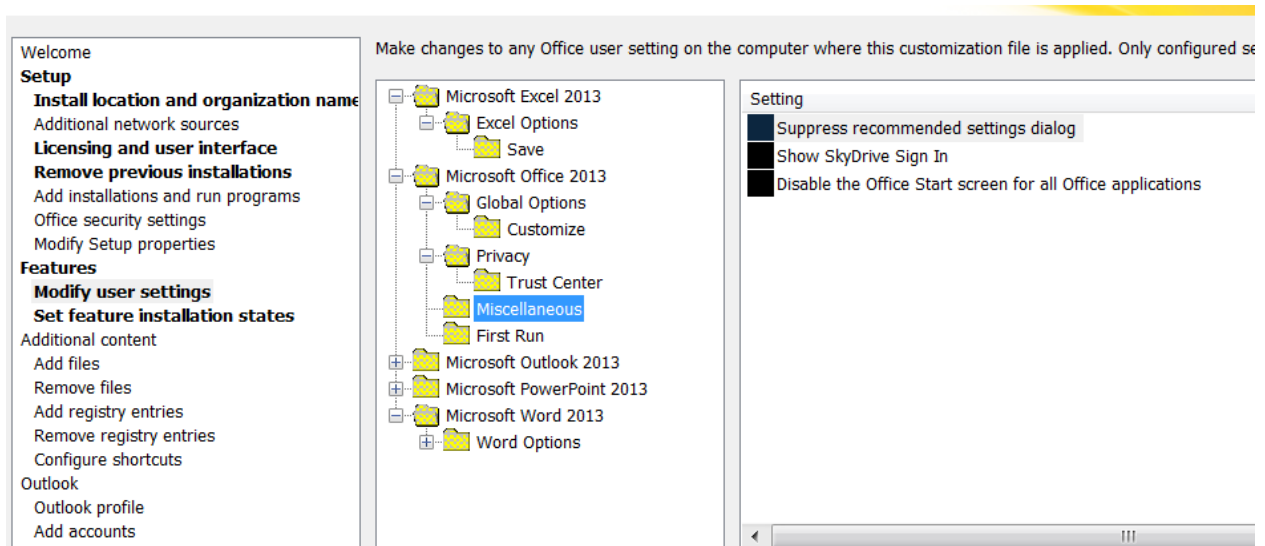
Prompt user to sign in to SkyDrive while performing a file save operation.

Disable the Office Start Screen for all Office applications

This policy setting controls whether the Office Start screen appears on boot for all Office applications.

If you enable this policy setting, users will not see the Office Start screen when they boot any Office application.

If you disable or do not configure this policy setting, users will see the Office Start screen when they boot their Office applications.



Disable First Run Movie

This policy setting determines whether a video about signing-in to Office is played when Office first runs.

If you enable this policy setting, the video does not run during Office First Run.

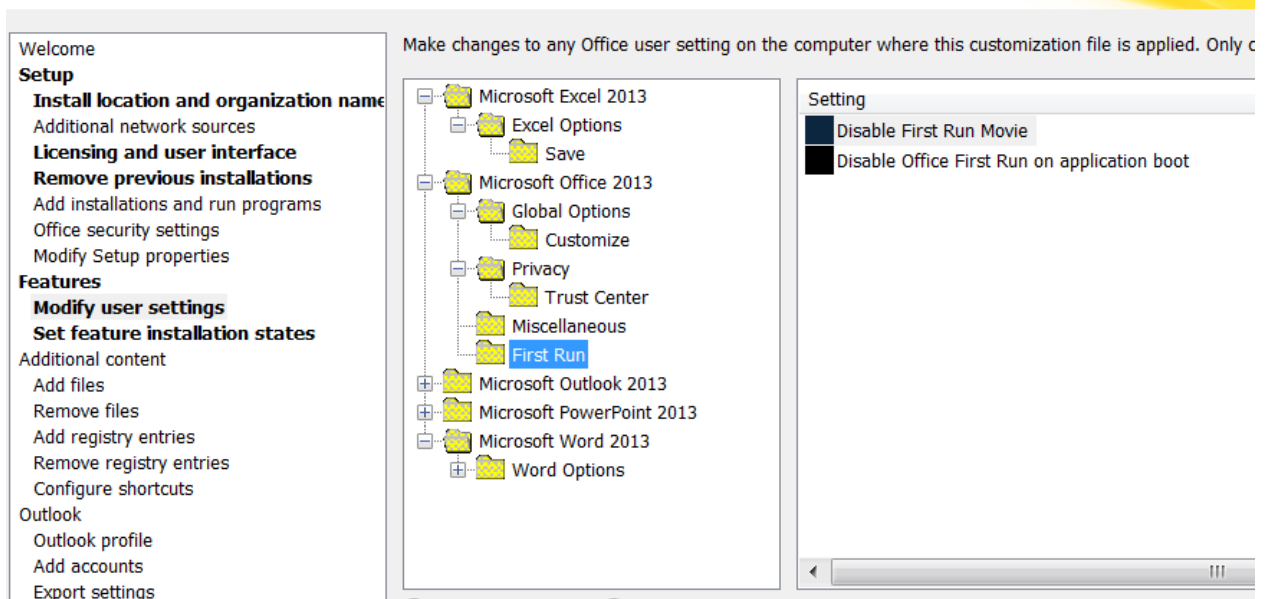
If you disable or do not configure this policy setting, a video about signing-in to Office plays when Office first runs.

Disable Office First Run on Application Boot

This policy setting determines whether the Office First Run comes up on first application boot if not previously viewed.

If you enable this policy setting, the Office First Run does not run on first application boot.

If you disable or do not configure this policy setting, the Office First Run about signing-in to Office comes up on first application boot if not previously viewed.



Turn off Outlook Social Connector

This policy setting allows you to turn off the Outlook Social Connector.

If you enable this policy setting, the Outlook Social Connector is turned off.

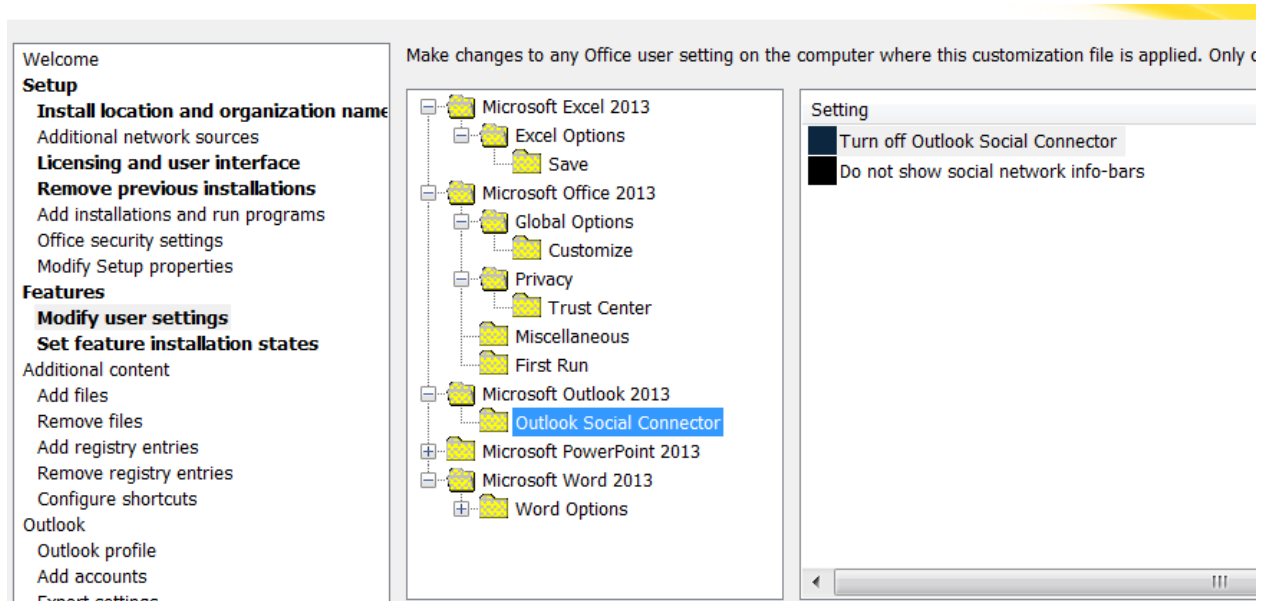
If you disable or you do not configure this policy setting, the Outlook Social Connector is turned on.

Do Not Show social network info-bars

This policy setting controls whether certain info-bar messages that will prompt users to install social network providers are displayed in the social connector.

If you enable this policy setting, the info-bars are not shown.

If you disable or you do not configure this policy setting, the info-bars are shown.

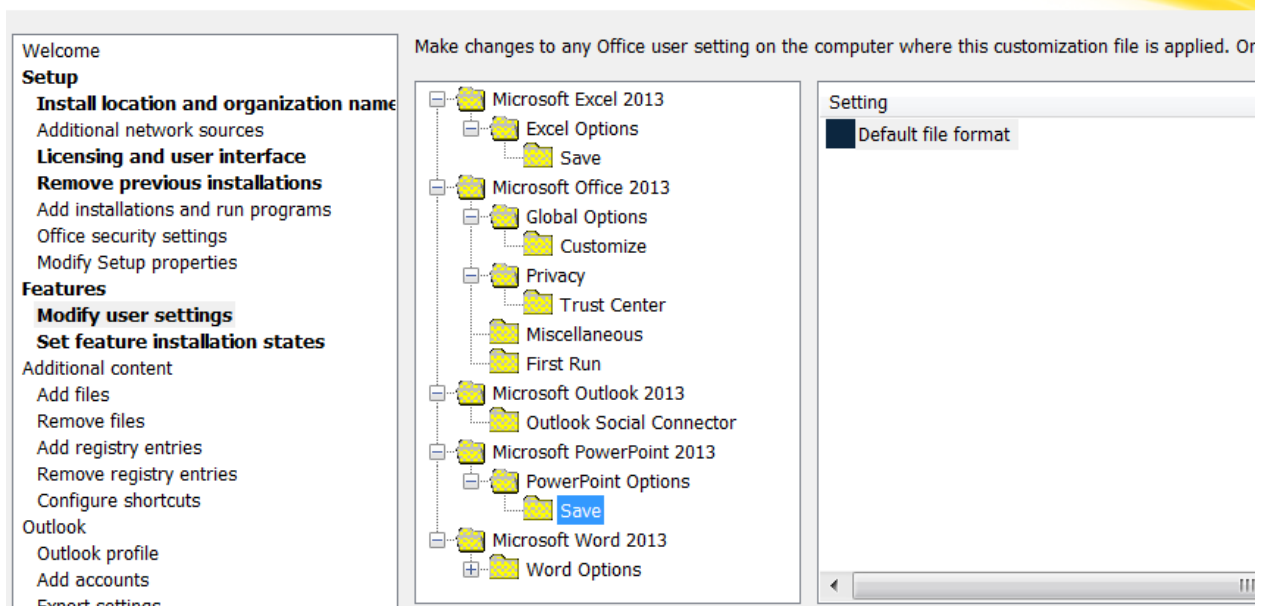


Default File Format – pptx

This policy setting governs the default format for new presentation files that users create.

If you enable this policy setting, when a user creates a new blank presentation, it is in the specified default format. Users may still override the default and specify a specific format when they create a presentation.

If you disable or do not configure this policy setting, PowerPoint Presentation is the default option.



Default File Format docx

This policy setting determines the default file format for saving files in Word.

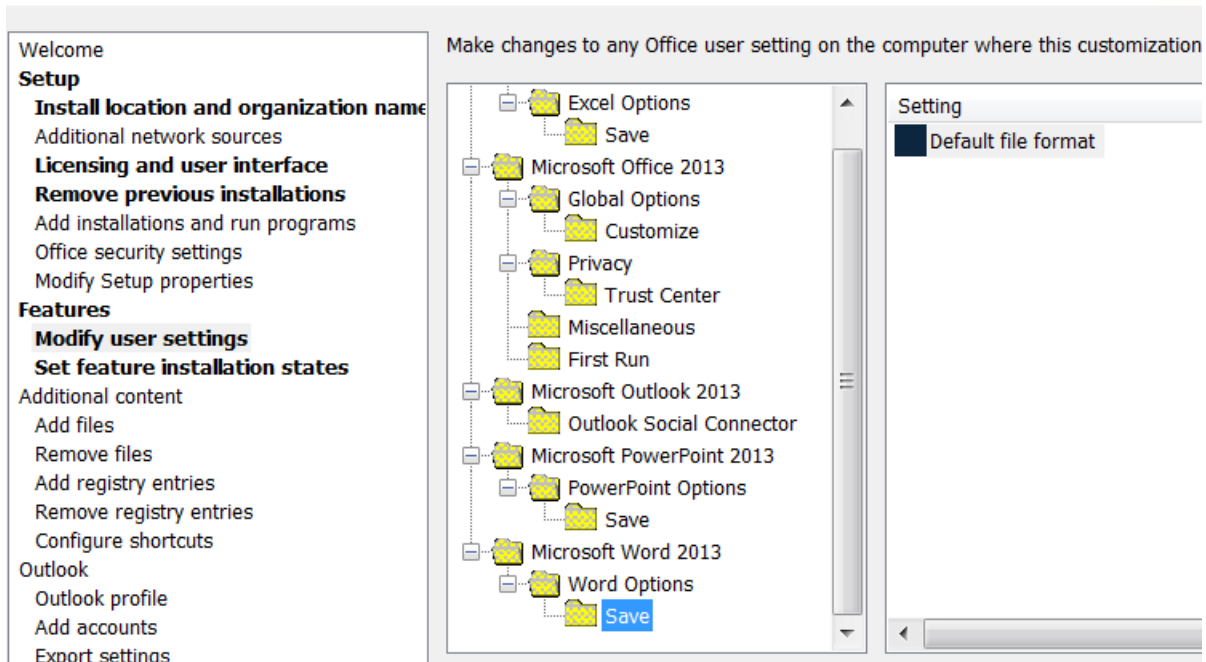
If you enable this policy setting, you can set the default file format from among the following options:

- Word Document (*.docx): This option is the default configuration in Word.
- Single Files Web Page (*.mht)
- Web Page (*.htm; *.html)
- Web Page, Filtered (*.htm, *.html)
- Rich Text Format (*.rtf)
- Plain Text (*.txt)
- Word 6.0/95 (*.doc)
- Word 6.0/95 - Chinese (Simplified) (*.doc)
- Word 6.0/95 - Chinese (Traditional) (*.doc)
- Word 6.0/95 - Japanese (*.doc)
- Word 6.0/95 - Korean (*.doc)
- Word 97-2002 and 6.0/95 – RTF
- Word 5.1 for Macintosh (*.mcw)
- Word 5.0 for Macintosh (*.mcw)
- Word 2.x for Windows (*.doc)
- Works 4.0 for Windows (*.wps)
- WordPerfect 5.x for Windows (*.doc)
- WordPerfect 5.1 for DOS (*.doc)
- Word Macro-Enabled Document (*.docm)
- Word Template (*.dotx)
- Word Macro-Enabled Template (*.dotm)
- Word 97 - 2003 Document (*.doc)
- Word 97 - 2003 Template (*.dot)
- Word XML Document (*.xml)
- Strict Open XML Document (*.docx)
- OpenDocument Text (*.odt)

Users can choose to save presentations or documents in a different file format than the default.

If you disable or do not configure this policy setting, Word saves new files in the Office Open XML format: Word files have a .docx extension. For users who run recent versions of Word, Microsoft offers the Microsoft Office Compatibility Pack, which enables them to open and save Office Open XML files. If some users in your organization cannot install the Compatibility Pack, or are running versions of Word older than Microsoft Office 2000 with Service Pack 3, they might not be able to access Office Open XML files.

This policy setting is often set in combination with the "Save As Open XML in Compatibility Mode" policy setting.



Feature Install State

Welcome

Setup

- Install location and organization name**
- Additional network sources
- Licensing and user interface**
- Remove previous installations**
- Add installations and run programs
- Office security settings
- Modify Setup properties

Features

- Modify user settings**
- Set feature installation states**
- Additional content
 - Add files
 - Remove files
 - Add registry entries
 - Remove registry entries
 - Configure shortcuts
- Outlook
 - Outlook profile

For each of the following Microsoft Office features, click to

- Microsoft Office
 - [+] [F] Microsoft Access
 - [+] [F] Microsoft Excel
 - [X] Microsoft SkyDrive Pro
 - [+] [F] Microsoft OneNote
 - [+] [X] Microsoft Outlook
 - [+] [F] Microsoft PowerPoint
 - [+] [F] Microsoft Publisher
 - [+] [F] Office Shared Features
 - [+] [F] Office Tools
 - Microsoft Visio Viewer
 - [+] [F] Microsoft Word
 - Microsoft InfoPath
 - [X] Microsoft Lync